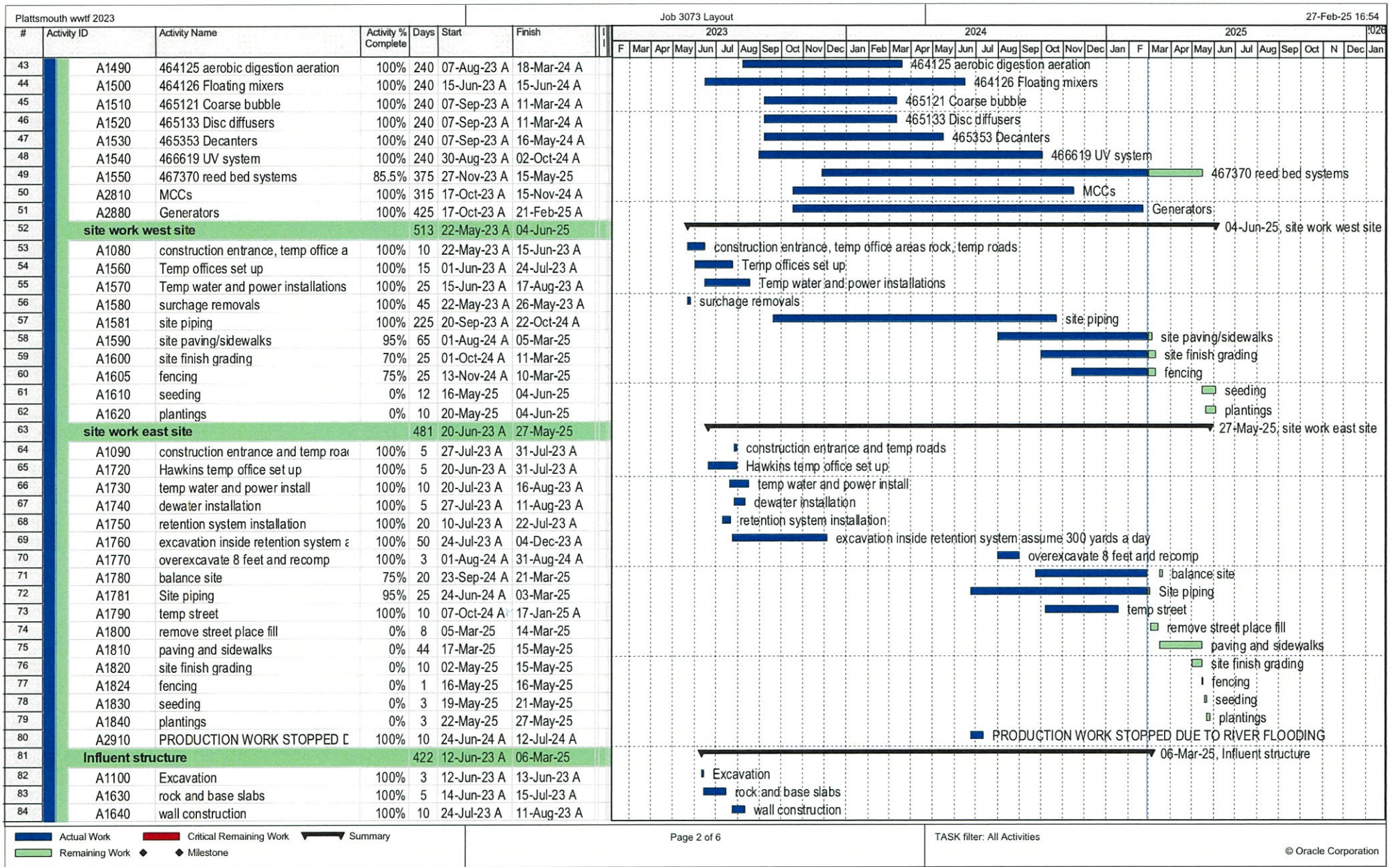
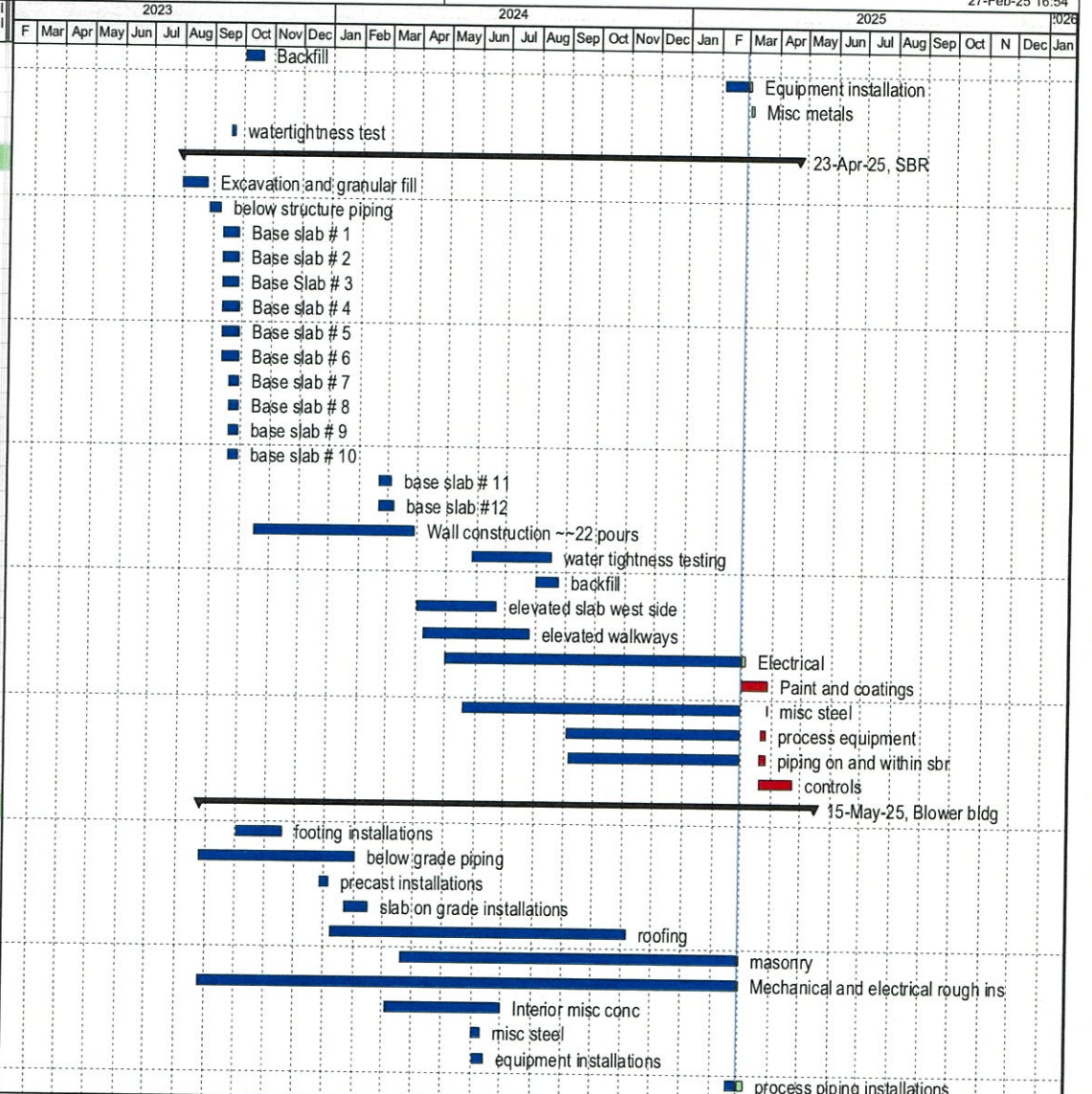


■ Actual Work   
 ■ Critical Remaining Work   
 ▼ Summary  
■ Remaining Work   
 ◆ Milestone



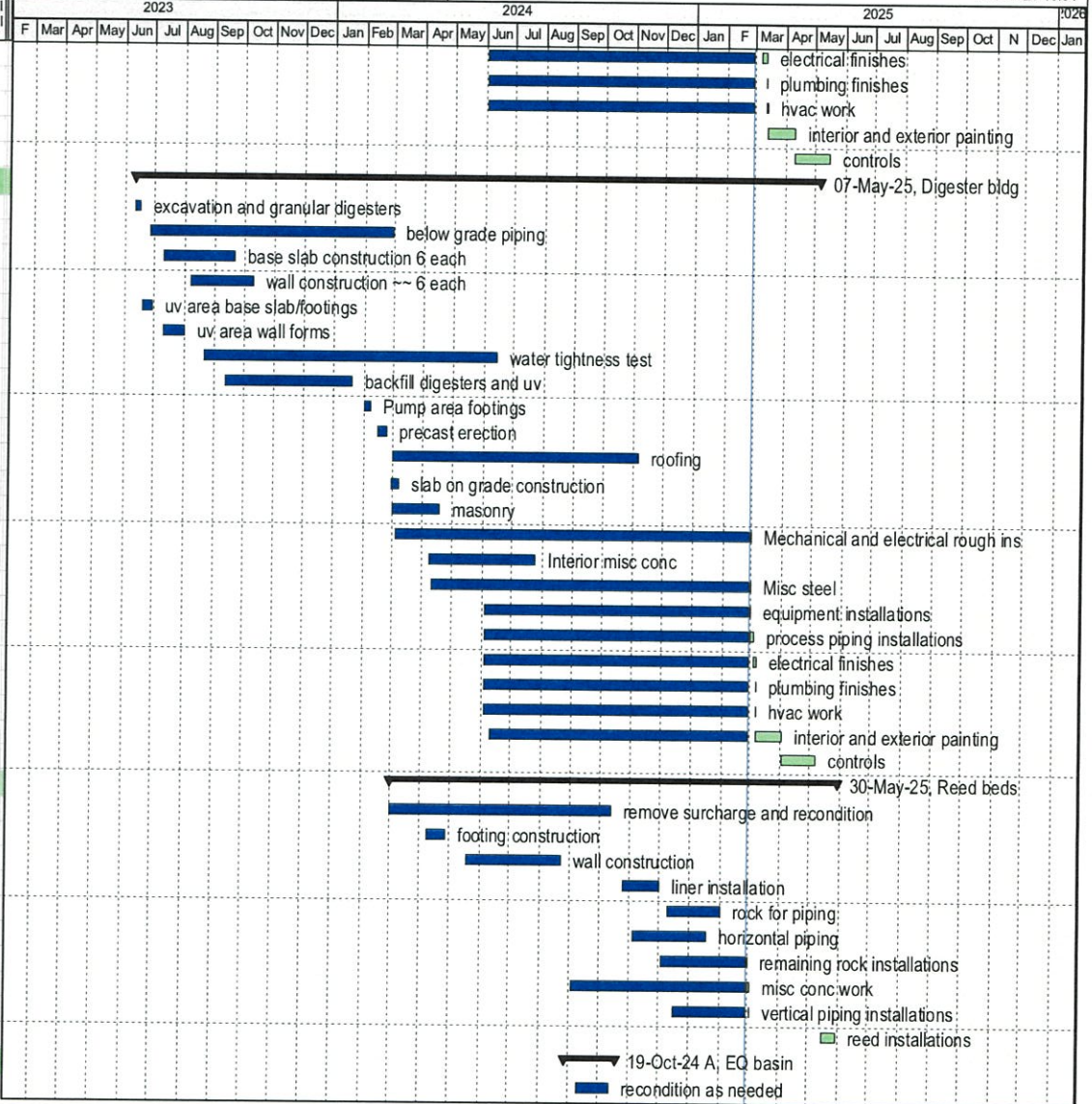
█ Actual Work   
 █ Critical Remaining Work   
 ▬ Summary  
█ Remaining Work   
 ◆ Milestone

#	Activity ID	Activity Name	Activity % Complete	Days	Start	Finish
85	A1650	Backfill	100%	3	02-Oct-23 A	20-Oct-23 A
86	A1660	Equipment installation	70%	5	04-Feb-25 A	03-Mar-25
87	A1670	Misc metals	0%	3	03-Mar-25	06-Mar-25
88	A2740	watertightness test	100%	7	18-Sep-23 A	22-Sep-23 A
89	<b>SBR</b>		420	31-Jul-23 A	23-Apr-25	
90	A1110	Excavation and granular fill	100%	28	31-Jul-23 A	25-Aug-23 A
91	A1115	below structure piping	100%	5	28-Aug-23 A	08-Sep-23 A
92	A1680	Base slab # 1	100%	12	11-Sep-23 A	27-Sep-23 A
93	A1690	Base slab # 2	100%	12	11-Sep-23 A	27-Sep-23 A
94	A1700	Base Slab # 3	100%	12	11-Sep-23 A	27-Sep-23 A
95	A1710	Base slab # 4	100%	12	11-Sep-23 A	28-Sep-23 A
96	A1850	Base slab # 5	100%	12	11-Sep-23 A	28-Sep-23 A
97	A1860	Base slab # 6	100%	12	11-Sep-23 A	28-Sep-23 A
98	A1870	Base slab # 7	100%	12	18-Sep-23 A	28-Sep-23 A
99	A1880	Base slab # 8	100%	12	18-Sep-23 A	28-Sep-23 A
100	A1890	base slab # 9	100%	12	18-Sep-23 A	28-Sep-23 A
101	A1900	base slab # 10	100%	12	18-Sep-23 A	28-Sep-23 A
102	A1910	base slab # 11	100%	12	21-Feb-24 A	05-Mar-24 A
103	A1920	base slab #12	100%	12	21-Feb-24 A	07-Mar-24 A
104	A1940	Wall construction ~-22 pours	100%	125	16-Oct-23 A	28-Mar-24 A
105	A1950	water tightness testing	100%	40	27-May-24 A	16-Aug-24 A
106	A1960	backfill	100%	20	01-Aug-24 A	23-Aug-24 A
107	A1970	elevated slab west side	100%	20	01-Apr-24 A	21-Jun-24 A
108	A1980	elevated walkways	100%	10	08-Apr-24 A	26-Jul-24 A
109	A1990	Electrical	95%	45	01-May-24 A	04-Mar-25
110	A2000	Paint and coatings	0%	20	28-Feb-25	27-Mar-25
111	A2010	misc steel	99%	45	20-May-24 A	27-Mar-25
112	A2020	process equipment	85%	25	03-Sep-24 A	26-Mar-25
113	A2030	piping on and within sbr	90%	45	05-Sep-24 A	26-Mar-25
114	A2040	controls	0%	25	19-Mar-25	23-Apr-25
115	<b>Blower bldg</b>		396	25-Aug-23 A	15-May-25	
116	A1180	footing installations	100%	15	02-Oct-23 A	18-Nov-23 A
117	A1930	below grade piping	100%	15	25-Aug-23 A	31-Jan-24 A
118	A2050	precast installations	100%	8	27-Dec-23 A	05-Jan-24 A
119	A2060	slab on grade installations	100%	10	22-Jan-24 A	14-Feb-24 A
120	A2070	roofing	100%	10	08-Jan-24 A	05-Nov-24 A
121	A2080	masonry	99%	15	20-Mar-24 A	28-Feb-25
122	A2090	Mechanical and electrical rough ins	97%	30	25-Aug-23 A	28-Feb-25
123	A2100	Interior misc conc	100%	10	04-Mar-24 A	30-Jun-24 A
124	A2110	misc steel	100%	8	01-Jun-24 A	10-Jun-24 A
125	A2120	equipment installations	100%	8	03-Jun-24 A	14-Jun-24 A
126	A2130	process piping installations	60%	12	17-Feb-25 A	07-Mar-25

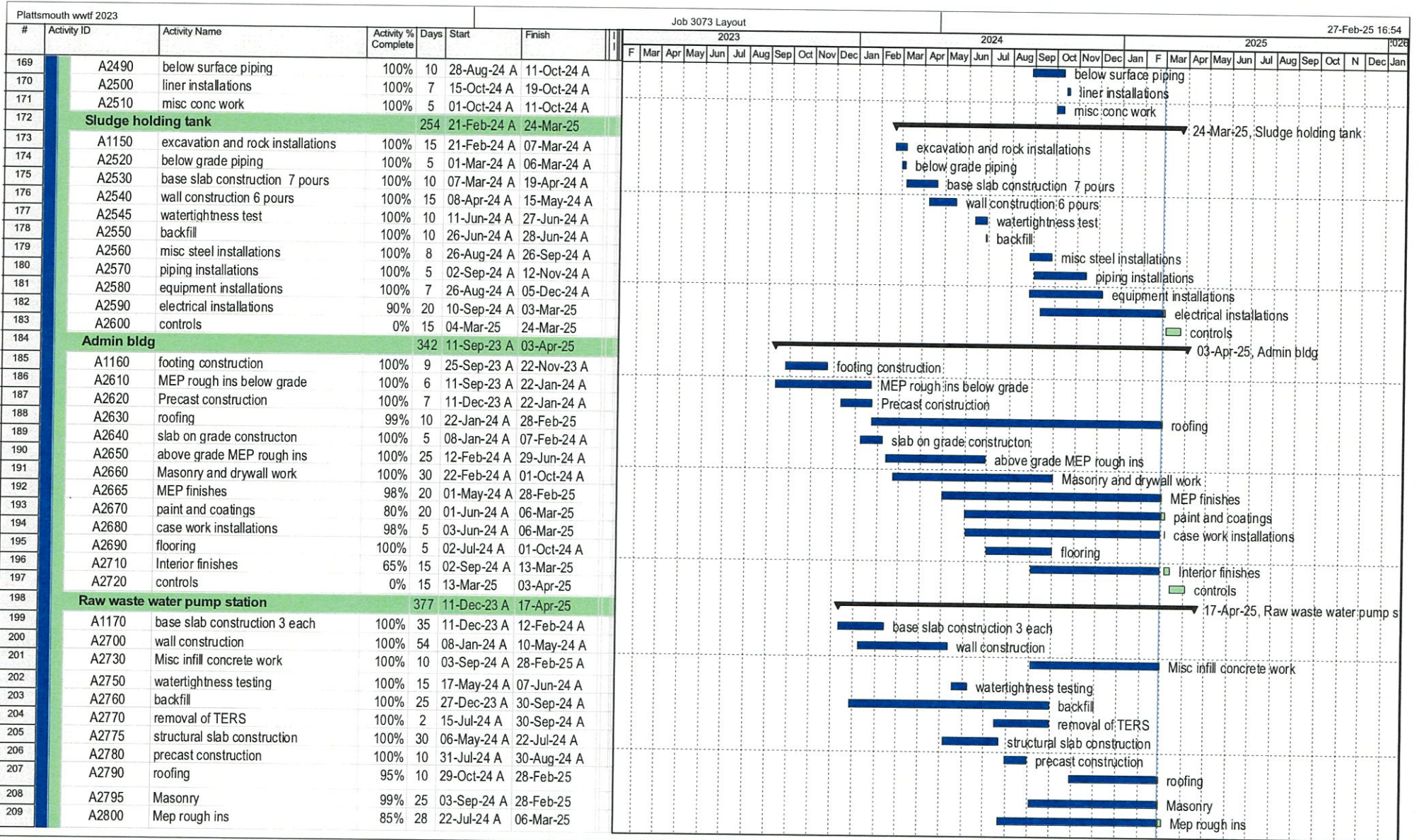


█ Actual Work   
 █ Critical Remaining Work   
 █ Remaining Work   
 ◆ Milestone   
 ▼ Summary

#	Activity ID	Activity Name	Activity % Complete	Days	Start	Finish
127	A2140	electrical finishes	85%	20	03-Jun-24 A	12-Mar-25
128	A2150	plumbing finishes	99%	20	03-Jun-24 A	12-Mar-25
129	A2160	hvac work	99%	20	03-Jun-24 A	13-Mar-25
130	A2170	interior and exterior painting	0%	20	13-Mar-25	10-Apr-25
131	A2180	controls	0%	25	10-Apr-25	15-May-25
132	<b>Digester bldg</b>		453	12-Jun-23 A	07-May-25	
133	A1120	excavation and granular digesters	100%	20	12-Jun-23 A	16-Jun-23 A
134	A2190	below grade piping	100%	15	27-Jun-23 A	29-Feb-24 A
135	A2200	base slab construction 6 each	100%	35	10-Jul-23 A	21-Sep-23 A
136	A2210	wall construction ~ 6 each	100%	52	07-Aug-23 A	10-Oct-23 A
137	A2220	uv area base slab/footings	100%	7	19-Jun-23 A	29-Jun-23 A
138	A2230	uv area wall forms	100%	15	10-Jul-23 A	01-Aug-23 A
139	A2235	water tightness test	100%	30	21-Aug-23 A	13-Jun-24 A
140	A2240	backfill digesters and uv	100%	7	11-Sep-23 A	19-Jan-24 A
141	A2250	Pump area footings	100%	5	01-Feb-24 A	07-Feb-24 A
142	A2260	precast erection	100%	7	14-Feb-24 A	23-Feb-24 A
143	A2270	roofing	100%	12	01-Mar-24 A	05-Nov-24 A
144	A2280	slab on grade construction	100%	7	28-Feb-24 A	07-Mar-24 A
145	A2290	masonry	100%	10	01-Mar-24 A	18-Apr-24 A
146	A2300	Mechanical and electrical rough ins	97%	30	04-Mar-24 A	28-Feb-25
147	A2310	Interior misc conc	100%	5	08-Apr-24 A	24-Jul-24 A
148	A2320	Misc steel	99%	25	10-Apr-24 A	28-Feb-25
149	A2330	equipment installations	98%	30	03-Jun-24 A	28-Feb-25
150	A2340	process piping installations	90%	25	03-Jun-24 A	04-Mar-25
151	A2350	electrical finishes	85%	20	03-Jun-24 A	07-Mar-25
152	A2360	plumbing finishes	99%	10	03-Jun-24 A	07-Mar-25
153	A2370	hvac work	99%	20	03-Jun-24 A	07-Mar-25
154	A2380	interior and exterior painting	10%	20	10-Jun-24 A	02-Apr-25
155	A2390	controls	0%	25	02-Apr-25	07-May-25
156	<b>Reed beds</b>		287	01-Mar-24 A	30-May-25	
157	A1140	remove surcharge and recondition	100%	10	01-Mar-24 A	12-Oct-24 A
158	A2400	footing construction	100%	20	08-Apr-24 A	26-Apr-24 A
159	A2410	wall construction	100%	65	18-May-24 A	23-Aug-24 A
160	A2420	liner installation	100%	10	25-Oct-24 A	01-Dec-24 A
161	A2430	rock for piping	100%	15	09-Dec-24 A	01-Feb-25 A
162	A2440	horizontal piping	100%	15	04-Nov-24 A	17-Jan-25 A
163	A2450	remaining rock installations	98%	30	03-Dec-24 A	28-Feb-25
164	A2460	misc conc work	95%	15	03-Sep-24 A	03-Mar-25
165	A2470	vertical piping installations	98%	10	16-Dec-24 A	03-Mar-25
166	A2480	reed installations	0%	10	15-May-25	30-May-25
167	<b>EQ basin</b>		34	28-Aug-24 A	19-Oct-24 A	
168	A1130	recondition as needed	100%	10	09-Sep-24 A	12-Oct-24 A



█ Actual Work   
 █ Critical Remaining Work   
 █ Remaining Work   
 ◆ Milestone   
 ⇨ Summary



█ Actual Work   
 █ Critical Remaining Work   
 ▶ Summary  
█ Remaining Work   
 ◆ Milestone

